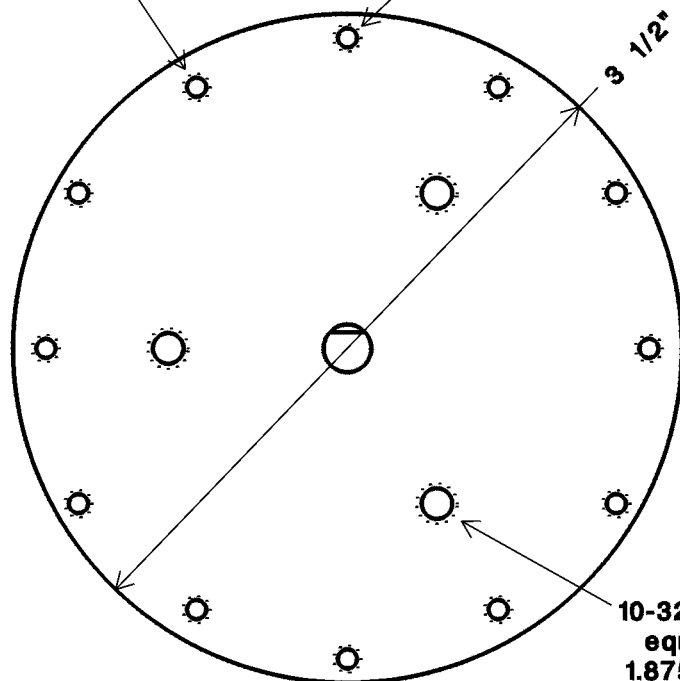


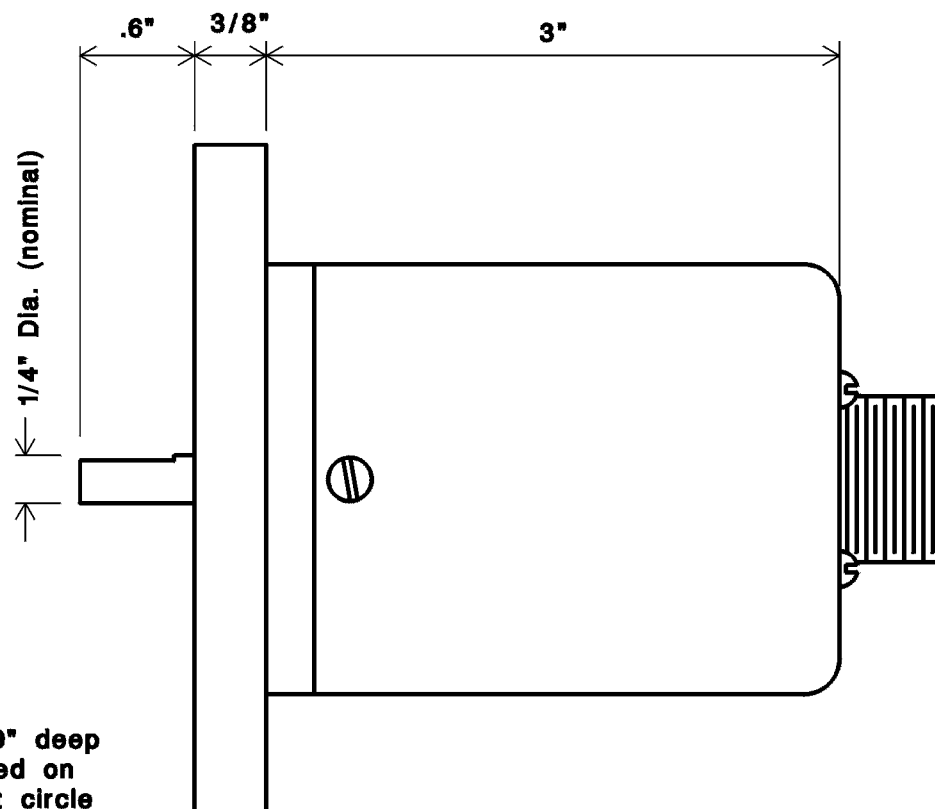
5-40 tap x .375" deep
equally spaced on
3.156" Dia bolt circle

6-32 tap x .375" deep
equally spaced on
3.250" Dia bolt circle

3 1/2" Dia.



10-32 tap x .19" deep
equally spaced on
1.875" Dia bolt circle



Connections

- A) no connection
- B) no connection
- C) Common (black)
- D) Output A (white)
- E) Supply voltage (red)
- F) no connection

See the RJ datasheet for more information
See also M92

Rev	Description	Date	Tolerances	M110: RJ encoder with modified shaft and adapter (ECCI PU861, PU866)		
			.XXXX ± .0005	BY: TRD MAT'L: 33A063 adapter, 34A017 shaft		
			.XXX ± .005			
			.XX ± .01	DATE: 3/9/98 FINISH: SCALE: 1 : 1		
			.X ± .015			
			Fractions ± 1/32	PHOTOCRAFT, Inc. Elburn, Illinois 8 A 110		
			Angles ± 15 min.			
			Runout ± .003			
			Unless otherwise specified			